

# Trend For Trade Made For Trade

Introduced in 2021, **Trend For Trade** has focused on developing and distributing energy-saving and cost-effective tricolour products accompanied by exceptional performance.

**Unoled**  
Downlights

**Multiled**  
Downlights

**Econoled**  
Downlights

**Candela**  
Surface Cans

**Luna**  
Oyster Lights

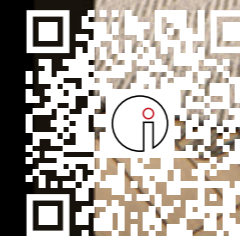
**Skylite**  
Panel Lights

**Nero**  
Weatherproof  
Battens

**Nero  
Emergency**  
Weatherproof  
Battens



Made For Trade

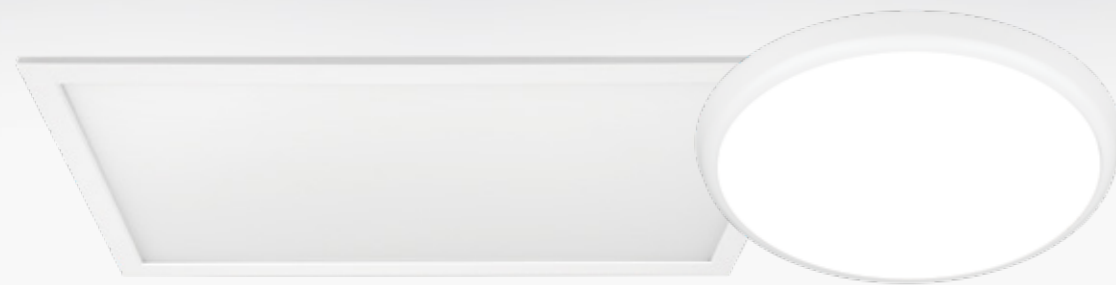


powered by  
**TREND**

# Reimagining lighting experience

Trend For Trade extends its lighting application, both indoor and outdoor, **delivering extraordinary performance, efficiency and flexibility.** In a flick of a switch, users can switch between three different colour temperatures, offering total integration in built environments.

1



## Skylyte <sup>1</sup>

**comparable to the luminosity of the sky**

Skylyte features a powder-coated aluminum frame and microprismatic diffuser, offering both aesthetic appeal and excellent light distribution. With a slim profile, Skylyte seamlessly integrates into any space, adding sophistication to your interior. Choose from various mounting kits, such as plaster recessed, surface mounted, or suspension to meet your specific installation needs.

## Nero <sup>2</sup>

**built to withstand challenging environments**

Featuring an impact-resistant polycarbonate diffuser and remarkable IP65 rating, Nero is the perfect lighting solution for demanding settings, allowing it to thrive in the harshest weather conditions. For added versatility, this series offers optional emergency lighting capabilities, ensuring safety and peace of mind during unexpected power outages. Come rain or shine, Nero continues to shine brightly, providing consistent and reliable performance.

2



## Luna <sup>3</sup>

**radiates brilliance akin to the moon itself**

Luna, a super slim oyster light that combines sleek design with an outstanding impact rating of IK10, making it a must-have for any environment. Crafted with a lightweight fire-rated material, Luna does not only ensure better heat and corrosion resistance but also guarantees durability and longevity. Much like the moon, the Luna emits a powerful and inviting glow that transforms any area into a beautifully illuminated space.

3

## Candela <sup>4</sup>

**can add value.  
can deliver results.  
can outperform others.**

Candela is meticulously engineered with superb rendering, IP54 protection, energy efficiency and effective glare control. Available in two sizes and three captivating colors, this surface-mounted downlight series seamlessly integrates into any space, enhancing its beauty with remarkable lighting performance. With a focus on energy efficiency, Candela minimises power consumption while maintaining excellent illumination, providing sustainability and cost-effectiveness.

4



5

## Unoled <sup>5</sup>

**epitome of reliability and performance  
in a compact package**

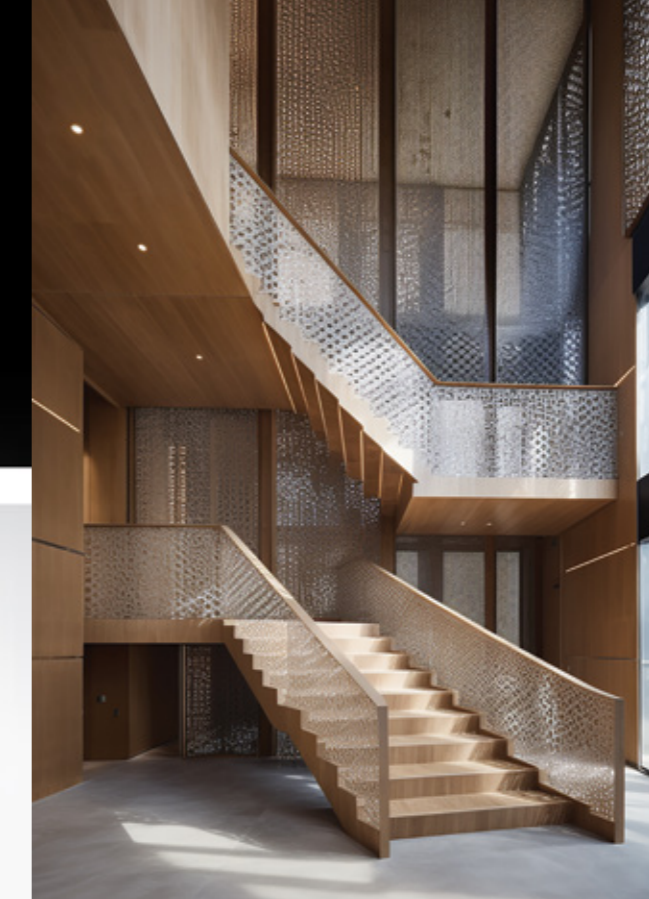
Unoled offers a durable lighting solution with its robust cast aluminium construction. The opal polycarbonate diffuser ensures even light distribution for a perfectly illuminated space. Additionally, it features a pressure-cast aluminium heatsink for efficient heat dissipation, maintaining optimal performance and extending its lifespan. Choose Unoled for outstanding performance and longevity in lighting.

7

## Multiled <sup>7</sup>

**multifaceted.  
multifunctional.  
multidimensional.**

Multiled offers various size options to fit any space perfectly. Its sleek profile adds modern elegance, and the opal polycarbonate diffuser provides soothing uniform light distribution. Multiled excels not only in aesthetics but also in quality and performance. Its durable aluminum profile ensures efficient heat dissipation, ensuring long-lasting performance without overheating issues. Enjoy a customised lighting experience with this range, choosing from different sizes and power options to achieve the ideal balance of brightness and energy efficiency.



## Econoled <sup>6</sup>

**our flagship downlight series**

Econoled is powered by a high-output COB LED, delivering impressive brightness and accurate colour reproduction (CRI 90+). With an IP65 rating, it's versatile for indoor and outdoor use, resisting both dust and moisture. Experience exceptional light quality with even and balanced illumination that enhances the ambience in any space. Econoled strikes the ideal balance between functionality and aesthetics, perfect for residential and commercial applications.

6

